



PAHIBALO

(ANNOUNCEMENT)



ANO (WHAT): *General Assembly*

SAN-O (WHEN): *May 26, 2017 (8:30am-12:00nn)*

SA DIIN (WHERE): *PI Training Center, Silay City*

*Palihog lantaw ang NAKALAKIP
nga AGENDA*

(Kindly refer to enclosed AGENDA)

Signed by:

Julieta Lariosa
BOT Secretary

April 27, 2017



Pag-inupdanay Mutual Benefit Association
Annual General Assembly Program and Agenda
May 26, 2017 (8:30am-12:00nn)
PI Training Center, Silay City

1. Invocation
2. National Anthem
3. Welcome Remarks..... Ma. Chingbee Prologo
BOT President
4. Inspirational Message..... Teodorico B. Peña
Founder of PI-MBA
Mercedes Cañal
Independent BOT Member
5. Introduction of Participants and
Declaration of Quorum Ma. Chingbee Prologo
BOT President
6. Review and Approval of Previous
General Assembly Minutes..... Julieta Lariosa
BOT Secretary
7. Presidents' Report Ma. Chingbee Prologo
BOT President
8. Treasurers' Report Marites Barcoma
BOT Treasurer
9. Resolution for the Appointment
of SGV as External Auditor Rolly Panganiban
PI-MBA Executive Director
10. Presentation of 2016 Accomplishment
and Plan for 2017 Rolly Panganiban
PI-MBA Executive Director
 - i. Management Report on Status of 2016 Plan
 - ii. Open Forum on Issues and Concerns on Program Implementation
Panelist: Erwin Palabrica, Eduardo Puerto and Rhoda Bravo
11. Election of BOT..... Erwin Palabrica
Claims Officer
 - i. Mechanics of Election
 - ii. Declaration of Vacancy
 - iii. Presentation of Pre-Election Activity
 - iv. Election Proper
 - v. Declaration of Newly Elected BOT
12. Adjournment
13. Closing Prayer Imelda Domadiego
Outgoing BOT-Member
14. Picture Taking

1. 2015 General Assembly Minutes

- Ang 2015 General Assembly ginhiwat sang December 18, 2015 sa PI Training Center, Brgy. Buenavista, Silay City. Ang ini nga Assembly amo man ang 2016 General Assembly suno sa naapprobahan nga pagligwat sang petsa sa paghiwat sang assembly nga natalana kada Mayo 18.
- Ang assembly gin tambungan sang walo (8) ka Board of Trustees kag 49 ka Center Chiefs nga naga tiglawas sang 24 ka branches. Sa meeting nagtambung man ang 7 ka staff sang MBA and executives sang PI nga ginpangunahan ni Mr. Eduardo Puerto.
- Nagsugod ang meeting alas 9:15 sang aga pinaagi sa pagpangamuyo kag pag amba sang National Anthem. Si Mr. Arnel Inson kag Ms. Lenvy Joy Muyet ang GA Master of Ceremony.
- Ang meeting gin pangunahan ni MBA President – Ms. Chingbee Prologo. Iya gin-abiabi ang mga representatives nga naghalin pa sa iban nga lugar. Upod sa Secretary, ila gindeklarar ang quorum.
- Ang Independent Board Member Dr. Mercedes L. Canal naghatag sang mensahe nga maka inspire sa tanan nga tumalambong sang meeting. Iya ginsaysay ang kaimportansya sa pagpauswag sang kinabuhi paagi sa :
 - *pag bukas sang kaugalingon sa gabay sang iban nga tawo/miembro,*
 - *pag hasa sang kaugalingon nga abilidad,*
 - *mangin handa sa pag tadlong sang mga kasaypanan,*
 - *ang ka-importansya sang relasyon sa isig ka tawo*
 - *pagbilin sang maayo nga binuhatan nga maka inspire sa iban,*
 - *labaw sa tanan ang pagsalig sa GINO-O*
- Mr. Eduardo Puerto PI Executive nagsaysay sang mga bag-o nga programs kag services kasubong sang livelihood trainings, etc. nga ginimplementar sang PI para sa kaayohan sang mga miembro. Iya ginhingyo ang supporta/partisipasyon sang mga nanay sa tanan nga ginabuhat sang PI.
- Ang President nag paambit sang iya report sa assembly. Iya ginsaysay ang pagta-as sang mga miembro, ang ginbaydan nga mga claims kag iban pa nga nahimu sang Asosasyon para sa miembro.
- Ginsaysay man sang Treasurer- Ms. Marites Barcoma ang pundo sang asosasyon Sa report iya ginpakita nga ang asosasyon may total nga Assets balor PhP46.34 Million, Reserve on Equity Value – PhP 21.87 Million, RSF Reserve – PhP 11.94 Million kag Guaranty Fund – PhP 7.35 Million. Iya man ginpakita ang mga gastos kag income sang asosasyon.
- Sa sini nga assembly gin aprobahan ang bag-o nga schedule sang General Assembly Meeting nga kada May 18 sang tuig kag ang pag-appoint sa SGV as External Auditor pinaagi sa *GA Resolution No. 3 and No. 4, series of 2015.*
- Gin estoryahan man sa General Assembly Meeting ang hilikuton para sa 2016 pina-agi sa Focus Group Discussion. Ang assembly nag identify sang mga programa nga maimplementar sang MBA. Ang mga miembro nag hisugot sang top 3 nga programa nga ma implementar sa 2016. Ini nga program amo ang:
 - *Burial Benefit Program*
 - *Medical and Hospitalization Program*
 - *College Educational Assistance Program*

- Naghiwat man sang Election para sa bakante nga posisyon sa Board of Trustees. Ang napili-an nga katapo sang Board of Trustees amo ang mga masunod:
 - *Ma Fe Gallenero*
 - *Imelda Domadiego*
 - *Lorena Tayo*
 - *Pamela Espartero*
 - *Julieta Lariosa*
- Nahisugtan man sa Assembly nga si Ms. Chingbee S. Prologo kag Ms. Marites Barcoma maga pabilin nga President and Treasurer, respectively sang Asosasyon.
- Ang General Assembly Meeting natapos alas 2:20 sang hapon pinaagi sa closing remark ni Ms. Lorena Tayo kag sa pagpanghatag sang Door Prizes.

2. President's Report

1. Membership

	2015	2016
Total Members	27,243	27,750
Recognized Members	1,376	1,610
Resigned	844	1,103

2. Number and Amount of Claims Paid

	2015		2016	
	Number	Amount	Number	Amount
Life	49	649,500.00	69	1,107,000.00
MVAH	14	45,477.50	14	55,432.72
Total	63	694,977.50	83	1,162,432.72
CLIP	17	212,758.50	19	106,973.46
Total	80	907,736.00	102	1,269,406.18

3. Settlement Period (2016)

No of Days	2015	2016
1	32	37
2	19	31
3	12	12
4	11	15
5	6	3
6 to 10 days		4
Total	80	102

4. *Comparative Members' Contribution and Refund/Withdrawal*

	Contribution		Refund/Withdrawal	
	2015	2016	2015	2016
Life	3,843,089.55	5,039,134.40	1,042,269.25	809,353.71
RSF	961,572.39	1,276,664.60	573,417.89	453,708.98
Credit Life	1,227,742.21	1,577,663.65	0	0

5. *Other Programs*

Educational Assistance Program	No. of student assisted: 26
Burial Assistance Program (BAP)	No. of Policies: 195
	No. of Claims
	2016: 1
	2017: 3
	Amount of Claims: 120,000.00

6. *Capacity building activities conducted and other highlights*

- a. Five (5) BOT members attended Governance and AMLC seminar in Manila
- b. Participated in Management Forum on Enterprise Risk Management in Legaspi attend by one (1) independent Board and two (2) senior staff
- c. Attendance of two (2) MIS personnel to ASEAN Corporate Scorecard Training
- d. The Association become top performer among Micro MBAs in the Philippines on the compliance of ASEAN Scorecard evaluated by Corporate Directors of the Philippines
- e. Associate membership to MiMAP and member of Endowment Committee
- f. Participated in the workshop on the IC revised guidelines annual statement preparation and Risk-Based Capital (RBC) computation
- g. Participated on effective and efficient claims processing in Cebu City
- h. Establishment and maintenance of Association's website (www.qpimba.org)
- i. Forged partnership with the following:
 - *Diocese of San Carlos MPC*
 - *Our Lady of Lourdes Mission Station, Brgy Hinakpan, Guihulngan, Neg. Oriental*
 - *Parish Pastoral Council of Cabagtasán, Brgy. Cod-cod, San Carlos City*
 - *GSLA*
- j. Program re-orientation and BAP Orientation Area level
- k. Conducted regular reconciliation in PI branches

3. Treasurer's Report

1. Comparative Income Statement

	Audited		% Increase or Decrease
	2015	2016	
Members' Contribution	3,843,089.00	5,039,134.40	31%
Premiums	1,365,721.00	1,577,663.65	16%
Members' Fees/Dues	4,070.00	5,550.00	36%
Dividend Income	145,420.00	141,020.00	-3%
Other Income-Interest income	1,229,685.00	1,554,064.00	26%
Miscellaneous Income	27,711.00	44,356.00	60%
Total Revenue	6,615,696.00	8,361,788.05	26%
Less:			
Benefits/Claims expenses -LIFE	694,977.50	1,162,432.72	67%
Benefits/Claims expenses -Optional	212,758.50	106,973.46	-50%
Allocation for Liability on Individual Equity Value	1,746,649.00	2,150,936.82	23%
Collection Fees	473,009.00	590,604.00	25%
Operating Expenses	2,897,693.00	2,907,597.00	0%
Total Costs and Operating Expenses	6,025,087.00	6,918,544.00	15%
NET COMPREHENSIVE SURPLUS(DEFICIT)	590,609.00	1,443,244.05	144%

2. Comparative Balance Sheet

	Audited		% Increase or Decrease
	2015	2016	
Cash and cash equivalents	18,095,426.00	19,005,552.00	5%
Short Term Investments	8,000,000.00	8,000,000.00	0%
Financial Assets-FPSDC Capital Share	1,479,000.00	2,192,555.00	48%
Receivables	18,560,997.00	20,824,621.00	12%
Prepayments & Other Assets	307,078.00	445,350.00	45%
Property and equipment	86,930.00	48,167.00	-45%
Total Assets	46,529,431.00	50,516,245.00	9%

	Audited		% Increase or Decrease
	2015	2016	
Liability on Individual Equity Value	22,182,619.00	23,971,381.49	8%
Basic Contingent Benefit Reserve	53,048.00	56,238.60	6%
Retirement Savings fund	12,169,229.00	13,055,249.53	7%
Retirement Fund Payable	652,665.00	652,665.00	0%
Optional Benefit Reserve	216,377.00	237,070.20	10%
Claims Payable on Basic Contingent Benefit	94,456.00	67,985.18	-28%
Accounts Payable & Accrued Payable	584,259.00	488,087.00	-16%
Total Liabilities	35,952,653.00	38,528,677.00	7%

	Audited		% Increase or Decrease
	2015	2016	
Restricted Fund-Guaranty	7,394,269.00	7,725,110.00	4%
Unrestricted Fund Balance	2,487,200.00	2,817,369.00	13%
Restricted Fund Balance	201,364.00	168,910.00	-16%
Donated Equity	163,776.00	163,776.00	0%
NET COMPREHENSIVE SURPLUS(DEFICIT)	330,169.00	1,112,403.00	237%
Total Fund Balance	10,576,778.00	11,987,568.00	13%
Total Liabilities and Fund Balance	46,529,431.00	50,516,245.00	9%

4. Status of 2016 Plan

- In 2015 December during the GA, an FGD was conducted
- FGD provides the venue to enable the members, through their representative, to participate in the identification of additional services and recommend possible solution to issues encountered in the implementation of the services of the association
- The following are the recommendations according to priority:

Recommendation	Status
<i>1. Burial Assistance</i>	<i>Implemented –BAP since June 2016</i>
<i>2. Hospitalization/ Health Care for Spouse and Children</i>	<i>Implementation is on-going with partner MFI</i>
<i>3. Provision of Educational Assistance to College Students</i>	<i>For further study and discussion with the Board</i>
<i>4. Other Priorities:</i>	
• <i>Livelihood Training Program</i>	<i>On-going implementation</i>
• <i>Increase in Contribution from 25 to 30 pesos per week</i>	
• <i>At least 1 grand children as legal dependent of member without qualified dependent</i>	
• <i>Increase of death benefit of members during the 1st 6 months of membership</i>	<i>Seek assistance with Actuary to conduct viability.</i>
• <i>Pension Plan</i>	<i>Product review is tentatively schedule on the last quarter of 2017</i>
• <i>Extension of Retirement age from 70 to 75</i>	
• <i>Increase the amount of benefit for educational assistance</i>	<i>For further study and discussion with the Board</i>

5. Election Mechanics and Guidelines

1. ANO ANG BOARD OF TRUSTEES (BOT)?

Ang BOT amo ang may pinakamata-as nga katungdanan sa Association.

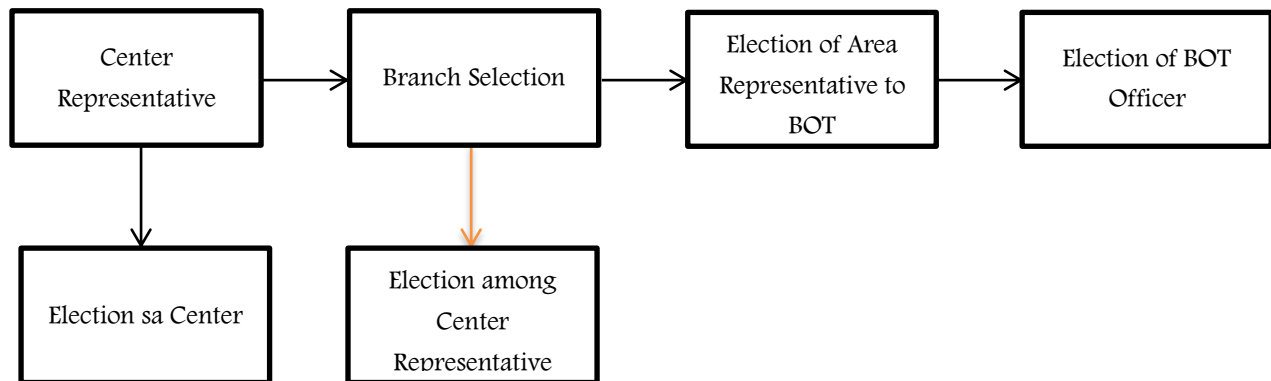
2. ANO ANG RESPONSABILIDAD SANG ISA KA BOT?

- Nagatindog bilang "ROLE MODEL" nga miembro sang asosasyon kay sang PI
- Pagbalay kag pag approve sang mga polisiya sang programa sang asosasyon
- Pag plano sang nagakaigo nga serbisyo para sa kaayohan sang katapo/miembro
- Naga monitor sang pondo, implementasyon sang polisa kag nagabulig patigayon sang on time release sang benepisyo sang miembro.
- Tagapamati kag nagahimo sang nagakaigo nga tikang para sa kasolbaran sang isyu nga naga tuhaw sa implementasyon sang program
- Tagabulig sa pagpahibalo o pagpa-intiende sa miembro nahanungod sa lakat sang programa kag operasyon sang asosasyon.
- Naga panguna sa pag pang recruit sang miembro.

3. ANO ANG QUALIFICATION SANG BOT?

- Miembro in "GOOD STANDING" sa PI and MBA.
- Masubra sa isa (1) ka tuig kag tunga nga miembro sang PI
- May maayo nga reputaston sa center kag kumunidad

6. Flow of Election



7. Vacancy

- Per Board Resolution No. 9 Series of 2017 dated May 12, 2017, the board unanimously approved and declared all Board Of Trustees position vacant to conform with the amended date of General Assembly Meeting.

8. Election Facilitator

Area	Facilitators
CASA ESTO CASA	Annabelle Escultor and Jeza Dimson
BATA SI MAMA VI	Rhoda Bravo and Cindy Marie Pavillar
SALVA PUL BAMUR SE LACAR	Arnel Inson and Erwin Palabrica
BINHÍ HÍMLACAS KM	Lenvi Joy Muyet and Charlene Enquilino
CHICS TB	Shane Cabayao and Rolly Panganiban